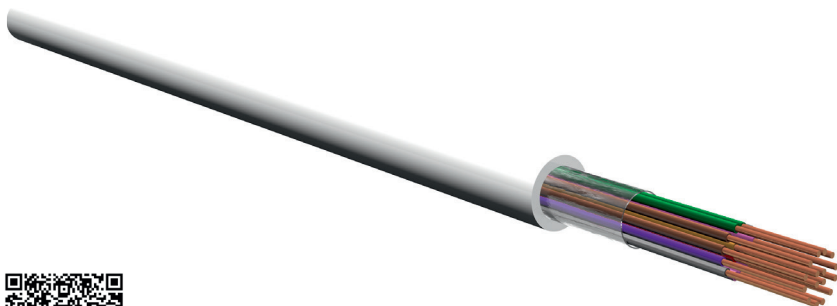


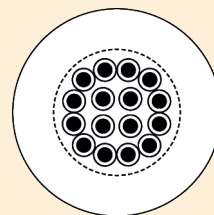
YR

Signal cable



RoHS

CROSS SECTION



Acc. to VDE 0815

APPLICATION

For installation as an insulation cable on or within plastered surfaces. However, they must not be used for heavy current installation purposes. For signal transmission in telecommunication and door intercom systems etc. They have been approved for all types of operating sites.

SPECIAL FEATURES

Sheath colour
White

STRUCTURE

Conductor	Copper, bare, class 1 – single core
Cores	PVC insulation
Outer sheath	PVC

TECHNICAL DATA

Temperature range	-5°C to + 70°C
Nominal voltage	100 V
Test voltage	2500 V
Bending radius	7.5 x cable diameter

Product description	Cu weight	Outer Ø (mm)	Weight (kg/km)	Product number
YR 2x0.8	9.6	4.0	25	3331002
YR 3x0.8	14.4	4.4	32	3331003
YR 4x0.8	19.2	4.9	40	3331004
YR 5x0.8	24.0	5.4	50	3331005
YR 6x0.8	28.0	5.8	58	3331006
YR 8x0.8	38.0	6.5	75	3331008
YR 10x0.8	48.0	7.6	98	3331010
YR 12x0.8	58.0	7.7	106	3331012
YR 14x0.8	67.0	8.2	122	3331014
YR 16x0.8	77.0	8.6	136	3331016
YR 20x0.8	96.0	9.1	173	3331020
YR 24x0.8	115.0	10.5	220	3331024