

Technical Data:

- 360 ° contact of the cable umbrella for improved EMC protection
- Material housing: zinc die casting - nickel -plated
- Contact material: Phosphorbronze
- coating contacts: nickel, gilded 0.5µ
- Catchment: max. 30n (according to IEC 60603-7-5)
- Tensile load: 7.7 kg between socket and Plug
- Operating temperature: -10 ° C up to +60 ° C
- Split cycles: = 750
- Diameter copper conductor: AWG (26/1 ... 22),
- Suitable for POE/POE+
- GHMT components certification

Applications:

As a telecommunications connection module for application Neutral telecommunications cable systems of cabling class 6a or applications up to 10GBase-T. The keystone module fits in all common keystone carrier systems.

Dimensions:

HxBxT 19 x 15 x 36mm

Characteristics:

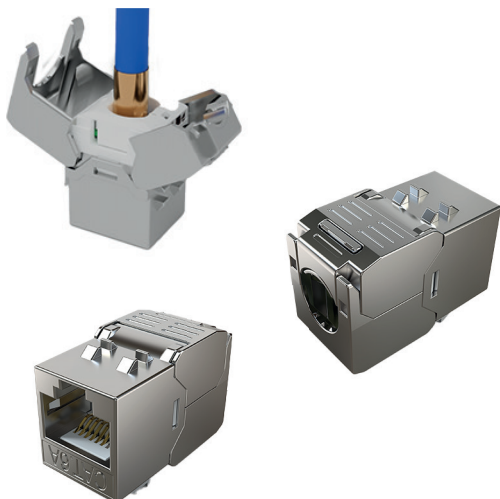
Cat6_A, Class E_A, bis 10GBase-T shielded, 500MHz
gem. EN 60603-7-51, ISO/IEC 11801

electrical Data:

| | |
|------------------------------------|-----------------------------------|
| Contact resistance | <20mΩ |
| Isolation resistance | >500mΩ |
| Contact - umbrella | >1000V AC 60Hz 1min |
| PoE suitability | PoE+ according to IEEE 802.3at |
| Socket contacts Split cycles | >1000 |
| Cutting terminals Repeatability | >50 |

| Variants | Dimensions in mm | Article number |
|---|------------------|----------------|
| e-fairline Keystone Modul Cat.6 _A 1xRJ45 | HxBxT 26x17x32mm | 1330117111TS |

Modul Keystone short Cat 6A bis 500 MHz



Technical Data:

- short version 28mm
 - 360° contacting of the cable shield for improved EMC protection
 - Housing material: zinc alloy
 - Contact material: phosphor bronze
 - Coating contacts: nickel, gold plated 0.5µ
 - Pulling force: Max. 30N (according to IEC 60603-7-5)
 - Operating temperature: -10°C up to +60°C
 - Mating cycles: = 750
 - Diameter copper conductor: AWG (26/1 ... 22),
 - Suitable for: PoE IEEE 802.3af
PoE+IEEE 802.3at
- Cat6A, Claas EA, shielded up to 10GBase-T, 500MHz according to EN 60603-7-51, ISO/IEC 11801

Applications:

As a telecommunications connection module for application neutral telecommunications cable systems of cabling class 6A or applications up to 10GBase-T. The Keystone module fits into all common Keystone carrier systems.

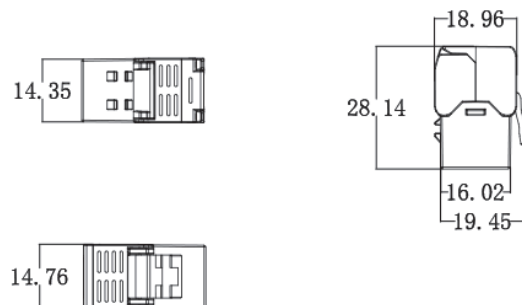
Characteristics:

Cat6_A, Claas E_A, bis 10GBase-T shieldet, 500MHz gem. EN 60603-7-51, ISO/IEC 11801

electrical Data:

| | |
|------------------------------|--------------------------------|
| Contact resistance | <20mΩ |
| Isolation resistance > Tense | 500mΩ |
| Contact - umbrella | >1000V AC 60Hz 1min |
| PoE suitability | PoE+ according to IEEE 802.3at |
| Socket contacts Split cycles | >750 |

Dimensions:



Variants

Dimensions in mm

Article number

e-fairline Keystone Modul short Cat.6_A 1xRJ45

HxBxT 19x15x28mm

1330126111

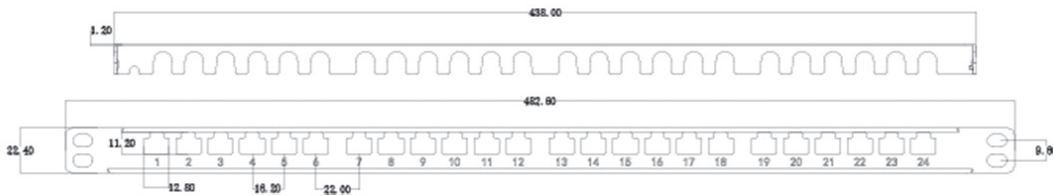


Applications:

Distribution panel for installation in 19" mounting grid. Installation height 0.5U. Front panel with 24 punched keystone holes to accommodate the Fairline modules. Printed port numbering and label fields. Removable cable support.

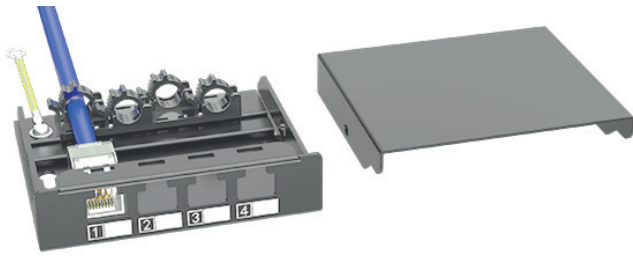
Dimension & Color:

HxBxT 22x683x86mm lightgray RAL7035



| Variants | Dimensions in mm | Article number |
|--|-------------------|----------------|
| e-fairline 19" Patch Panel empty, 24 Port RAL7035 0,5U | HxBxT 22x683x86mm | 133087004 |

Patch Panel Empty Housing 4, 6 or 8 Port



Technical Data:

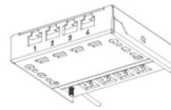
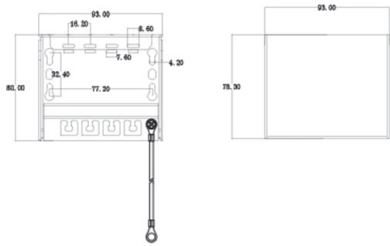
Distribution panel for Keystone modules empty, installation height 0.5U. Front panel with 4, 6 or 8 punched keystone holes to accommodate the Fairline modules. Printed port numbering. Tool-free cable support.

4 Port



Dimension & Color:

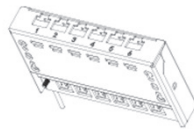
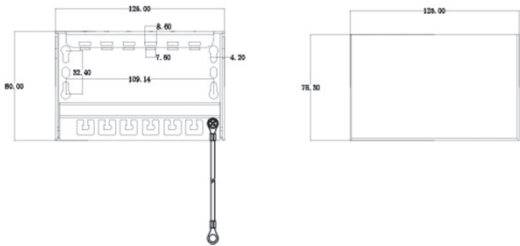
4 Port HxBxT 22,4x 93x80mm light gray RAL7035
 6 Port HxBxT 22,4x125x80mm light gray RAL7035
 8 Port HxBxT 22,4x157x80mm light gray RAL7035



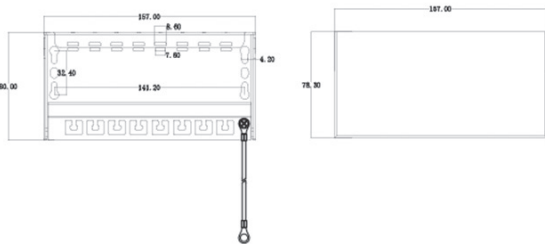
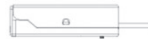
Material:

Base plate: 1.5 mm thick steel plate with plastic powder coating
 Top cover: 1.2mm thick metal plate with powder coating

6 Port



8 Port



Variants

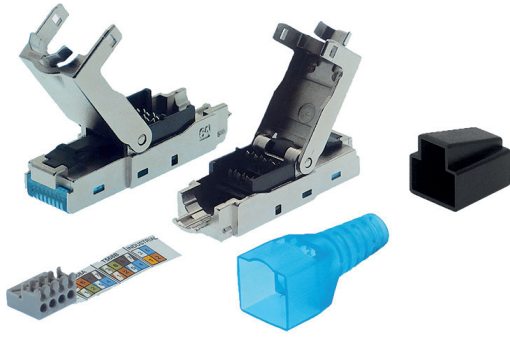
Dimensions in mm

Article number

e-fairline Mini Patch panel empty 0,5U 4Port
 e-fairline Mini Patch panel empty 0,5U 6Port
 e-fairline Mini Patch panel empty 0,5U 8Port

HxBxT 22,4x 93x80mm
 HxBxT 22,4x125x80mm
 HxBxT 22,4x157x80mm

133087001
 133087002
 133087003



Technical Data:

- Housing with zincplating
- 1x RJ45 plug
- Color code according to TIA/EIA 568A and B
- Conductor diameter AWG 22-27
- 360 ° shielding

Applications:

RJ45 plugs, field confectionable, tool -free, category 6a
 According to EN 60603-7-51. Ideal for supplying end devices such as WLAN access points, security cameras with data connection and supply via POE and POE+.

Dimensions:

Plug length 45mm without cable spout
 Housing length 68mm with cable spout

Characteristics:

Cat6a, shielded up to 10GBase-T, 500MHz
 According to EN 60603-7-51, ISO/IEC 11801 Class EA ADM 1.0 & 2.0
 IEC 60512-4-1 Method A

electrical Data:

| | |
|--------------------------|--------------------------------|
| PoE suitability | PoE+ according to IEEE 802.3at |
| Split cycles (RJ45 page) | >750 |
| Nominal output | 1.5A |

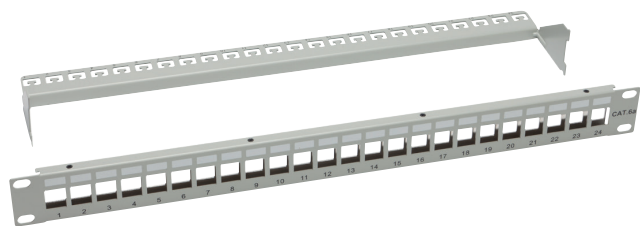
Variants

Article number

e-fairline Field confectionable RJ45 connector Cat.6a tool free assembly

133S10014-T

Modularsystem 19" Carrier & empty Sockets

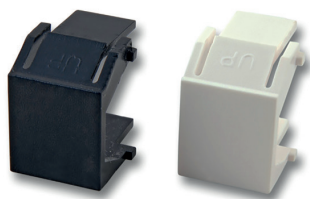


Application:

Distribution panel for installation in 19" fastening grid. Installation height 1U. Front panel with 24 punched out keystone holes for installing the Fairline modules. Printed port numbering and labeling fields. Removable cable grip.

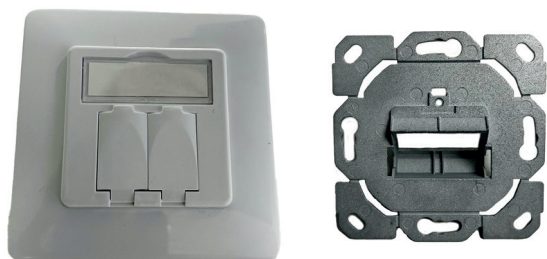
Dimensions & Color:

HxBxT 45x485x120mm lightgray RAL7035



Applications:

Fairline Finish plug white or black for Keystone empty fields in the 19" Keystone carrier. VPE 100 pieces



Applications:

Empty Data Socket Frame for 1 or 2 or 3 fairline modules. Labeling field with clear cover. Dust protection flaps integrated in the central plate. Delivery including cover frames.

Dimensions & Color:

HxBxT 80x80x20mm white RAL9010

| Variants | Dimensions in mm | Article number |
|---|--------------------|----------------|
| e-fairline 19" Patch Panel empty, 24 Port RAL7035 lightgray | HxBxT 45x485x120mm | 1330117121T |
| e-fairline Frame white RAL9010 für 1 Fairlinemodule | HxBxT 80x80x20mm | 1330117171T |
| e-fairline Frame white RAL9010 für 2 Fairlinemodule | HxBxT 80x80x20mm | 1330117131T |
| e-fairline Frame white RAL9010 für 3 Fairlinemodule | HxBxT 80x80x20mm | 1330117161T |
| e-fairline Plug white für Keystoneausbrüche | 100Stück | 1330117112T |
| e-fairline Plug black für Keystoneausbrüche | 100Stück | 1330117113T |



Applications:

Wall assembly housing for combination with fairline 1 -fold or twice or 3 -fold recording frame as well as data boxes CAT6 and CAT6A1

Dimension & Color:

HxBxT 80x80x40mm white RAL9010



Applications:

Module carrier as a rail installation device. Attachment for 35mm hat rail. Plastic housing. Labeling field with clear cover.

Dimension & Color:

HxBxT 90x20x65mm gray

| Variants | Dimensions in mm | Article number |
|---|------------------|----------------|
| e-fairline Wall mounting Housing, white RAL9010 | HxBxT 80x80x40mm | 1330102AP9010 |
| e-fairline Modul Carrier as rail installation | HxBxT 90x20x65mm | 133Z10007T |