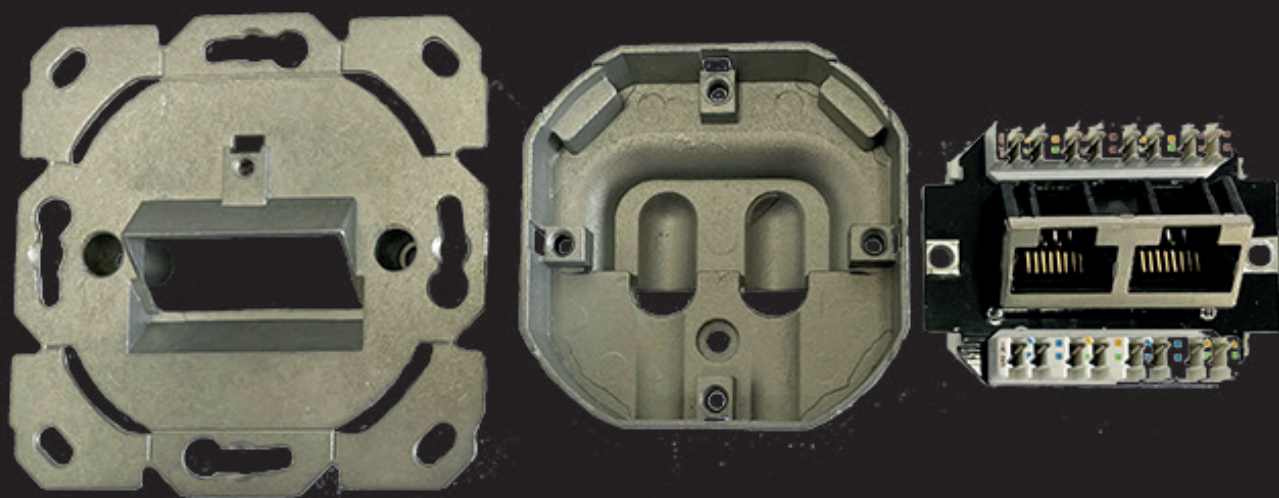


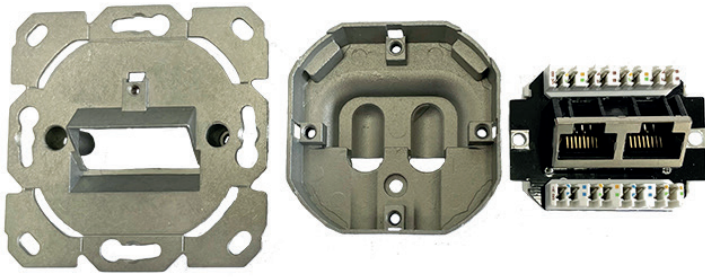
e-fairline

Connection System Cat6A



elmat[®]

NEW DATA SOCKETS & PATCH PANELS
DATEA & NETWORK TECHNOLOGY



Technical Data:

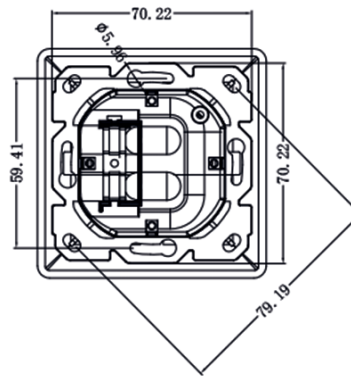
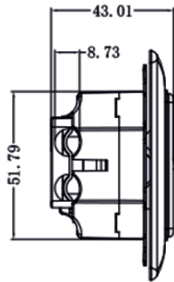
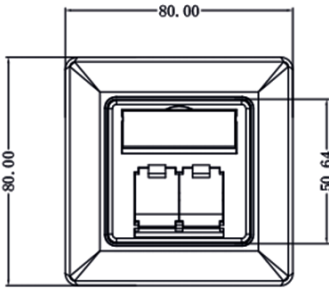
- Zinc die-cast housing
- 2x RJ45 ports
- Connection via LSA+ compatible insulation displacement terminals
- Color code according to TIA/EIA 568A and B
- Conductor diameter AWG 22-24
- Cable entry from the rear (variable in 90° steps)
- Cable support and shielding using screw terminals
- with central plate 50x50mm and frame 80x80mm
- Designable, in all common switch programs integrable
- Color white RAL9003

Applications:

As a telecommunications connection for application-neutral telecommunications cable systems of cabling class 6A or applications up to 10GBase-T
 ISO/IEC 11801 ED.2.2:2011-06
 DIN EN 50173-1:2011-09

Dimensions:

HxBxT 80x80x43mm



Characteristics:

Cat6A, Class EA, shielded, 500MHz

PoE per IEEE 802.3af, PoE+ per IEEE 802.3at

Temperature resistance
 mounting: -40° to +70°
 installed: -10° to +60°

Compliance with Class EA up to 500MHz

Weight: 18.5g

Electrical Data:

Contact resistance	20mΩ
Insulation resistance	500MΩ
Dielectric strength	
Contact - Housing	1000V DC, 700V AC
Contacts	60Hz 1min
Mating cycles	phosphor/bronze/50μ gold >750

Description

e-fairline 2x Data Socket Cat6A
 incl. Central Disc 50x50mm RAL9003
 incl. Frame 80x80mm RAL 9003

Dimension

HxBxT 80x80x43mm

Item Number

13301132EKR9010



Technical Data:

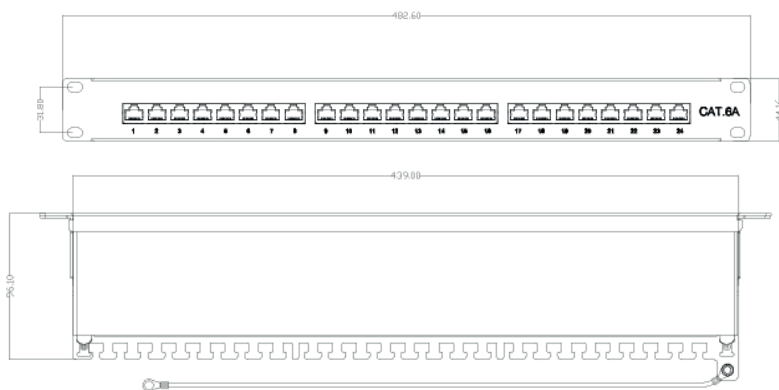
- 19" distributor 1U
- 24x RJ45 ports shielded
- Connection via LSA+ compatible insulation displacement terminals
- Color code according to TIA/EIA 568A and B
- Conductor diameter AWG 22-24
- Sheet steel housing painted
- Color light gray

Applications:

As a telecommunications connection distributor for application-related Neutral telecommunications cable systems with cabling class 6A or applications up to 10GBase-T in accordance with EN 60603-7-51.

Dimensions:

HxBxT 44x482x96mm



Characteristics:

Cat6_A, Class E_A, shielded, 500MHz

Compliant to ANSI/TIA/EIA-568 B.2-1
ISO/IEC 11801:2002 CLASS EA

Electrical Data:

Contact resistance	100mΩ
Insulation resistance	1000MΩ
Dielectric strength	
Contact - housing	750V AC
	60Hz 1min
Mating cycles	750
Temperature resistant	
Storage:	-40° to +70°
Operation:	-10° to +60°

Description

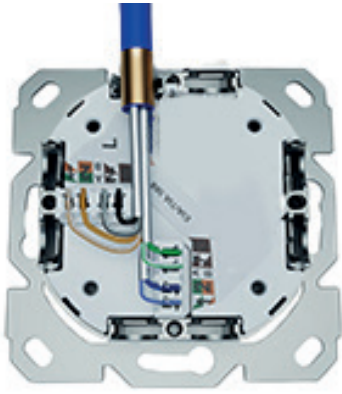
e-fairline 19" 1HE 24 Port Patch Panel Cat6A light gray

Dimension

HxBxT 44x482x96mm

Item Number

133021324



Technical Data:

- Zinc die-cast housing
- 1x RJ45 ports
- Connection via LSA+ compatible insulation displacement terminals
- Color code according to TIA/EIA 568A and B
- Conductor diameter AWG 22-24
- Cable entry from the rear (variable in 90° steps)
- Cable support and shielding using screw terminals
- with central plate 50x50mm and frame 80x80mm
- Designable, in all common switch programs integrable
- Color white RAL9003

Applications:

As a telecommunications connection for application-neutral telecommunications cable systems
Cabling Class 6A or applications up to 10GBase-T according to ISO/IEC 11801 ED.2.2:2011-06

Dimensions:

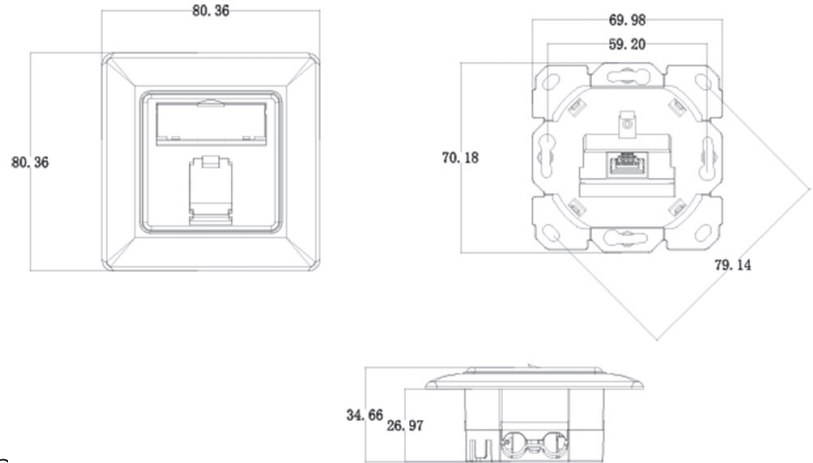
HxBxT 80x80x35mm

Characteristics:

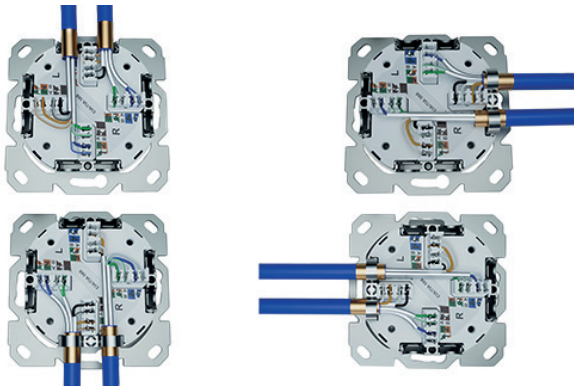
Cat6A, Claas EA, shielded, 500MHz

Electrical Data:

Contact resistance	20mΩ
Insulation resistance	500MΩ
Dielectric strength	1000V DC, 700V AC
Contact - Housing	60Hz 1min
Contacts	phosphor/bronze/50μ gold
Mating cycles	>750
Temperature resistance	
mounting:	-40° to +70°
installed:	-10° to +60°



Description	Dimension	Item Number
e-fairline 1x Data Socket Cat6A incl. Central Disc 50x50mm RAL9003 incl. Frame 80x80mm RAL 9003	HxBxT 80x80x35mm	13301151EKR9010



Technical Data:

- Zinc die-cast housing
- 2x RJ45 ports
- Connection via LSA+ compatible insulation displacement terminals
- Color code according to TIA/EIA 568A and B
- Conductor diameter AWG 22-24
- Cable entry from the rear (variable in 90° steps)
- Cable support and shielding using screw terminals
- with central plate 50x50mm and frame 80x80mm
- Designable, in all common switch programs integrable
- Color white RAL9003

Applications:

As a telecommunications connection for application-neutral telecommunications cable systems
Cabling Class 6A or applications up to 10GBase-T according to ISO/IEC 11801 ED.2.2:2011-06

Dimensions:

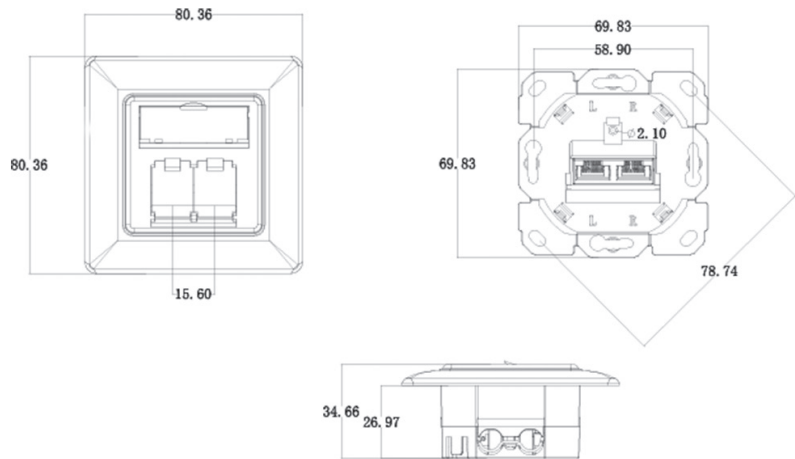
HxBxT 80x80x35mm

Characteristics:

Cat6A, Claas EA, shielded, 500MHz

Electrical Data:

Contact resistance	20mΩ
Insulation resistance	500MΩ
Dielectric strength	
Contact - Housing	1000V DC, 700V AC
Contacts	60Hz 1min
Mating cycles	phosphor/bronze/50μ gold >750
Temperature resistance	
mounting:	-40° to +70°
installed:	-10° to +60°



Desription

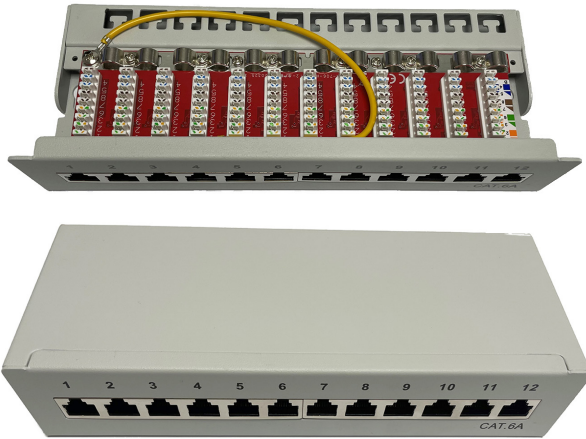
e-fairline 2x Data Socket Cat6A
incl. Central Disc 50x50mm RAL9003
incl. Frame 80x80mm RAL 9003

Dimension

HxBxT 80x80x35mm

Item Number

13301152EKR9010



Technical Data:

- Surface-mounted or table-top distributor 1U
- 8x or 12x RJ45 ports shielded
- Connection via LSA+ compatible insulation displacement terminals
- Color code according to TIA/EIA 568A and B
- Conductor diameter AWG 22-24
- Cable support with cable ties
- Sheet steel housing painted
- Color gray RAL7035

Applications:

As a telecommunications connection distributor for application-related Neutral telecommunications cable systems of cabling class EA or applications up to 1Gbits/s in accordance with EN 60603-7-5, of course neutrally certified.

ISO/IEC 11801:2002 Class EA

Dimensions:

HxBxT 22x220x97mm 8Port
HxBxT 44x239x109mm 12Port

Characteristics:

Cat6A, Class EA, shielded, 500MHz

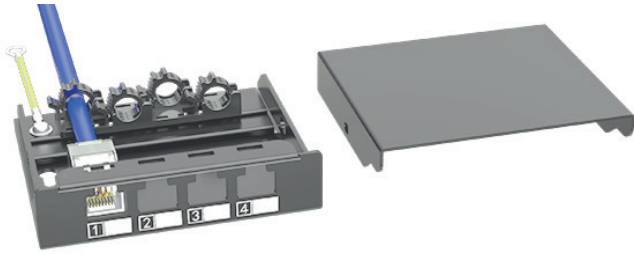
Temperature resistance
mounting: -40° to +70°
installed: -10° to +60°

Electrical Data:

CONTACT RESISTANCE: 100mΩ
INSULATION RESISTANCE: 1000mΩ 500V DC
DIELECTRIC STRENGTH: 750V AC RMS 60Hz, 1MIN
CAT.6A PERMANENT LINK: COMPLIANT WITH ANSI/TIA/EIA-568 B.2-1
ISO/IEC 11801:2002 CLASS EA
Rated voltage: 125V AC RMS
Mating cycles: >750

Compliance with Class EA up to 500MHz

Description	Dimension	Item Number
Fairline AP housing 8 port patch panel Cat6A gray RAL7035	HxBxT 44x158x86mm	133085005
Fairline AP housing 12 port patch panel Cat6A gray RAL7035	HxBxT 44x218x86mm	133085006



Technical Data:

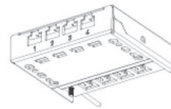
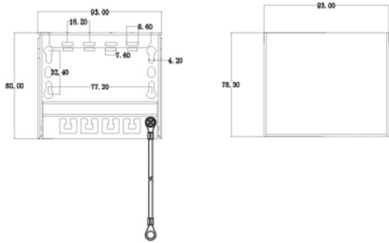
Distribution panel for Keystone modules empty, installation height 0.5U. Front panel with 4, 6 or 8 punched keystone holes to accommodate the Fairline modules. Printed port numbering. Tool-free cable support.

4 Port



Dimension & Color:

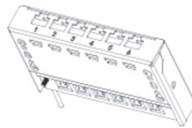
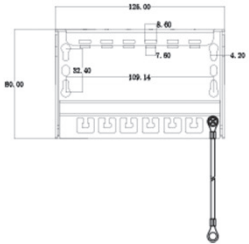
4 Port HxBxT 22,4x 93x80mm light gray RAL7035
 6 Port HxBxT 22,4x125x80mm light gray RAL7035
 8 Port HxBxT 22,4x157x80mm light gray RAL7035



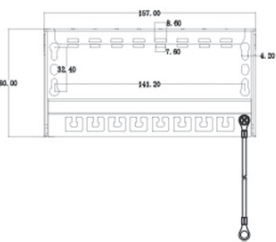
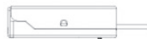
Material:

Base plate: 1.5 mm thick steel plate with plastic powder coating
 Top cover: 1.2mm thick metal plate with powder coating

6 Port



8 Port



Description

Dimension

Item Number

e-fairline Mini Patch Panel empty 0,5HE 4Port
 e-fairline Mini Patch Panel empty 0,5HE 6Port
 e-fairline Mini Patch Panel empty 0,5HE 8Port

HxBxT 22,4x 93x80mm
 HxBxT 22,4x125x80mm
 HxBxT 22,4x157x80mm

133087001
 133087002
 133087003

19" Patch Panel Empty Housing 0,5HE grau

Applications:



Distribution panel for installation in 19" mounting grid. Installation height 0.5U. Front panel with 24 punched keystone holes to accommodate the Fairline modules. Printed port numbering and label fields. Removable cable support.
HxWxD 22x683x86mm light gray RAL7035

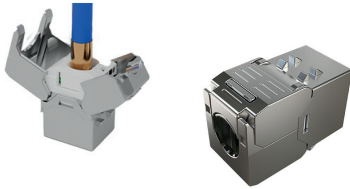
e-fairline 19"Patch Panel empty, 24 Port RAL7035 0,5HE

Item Number

133087004

Modul Keystone short Cat 6A bis 500 MHz

Applications:



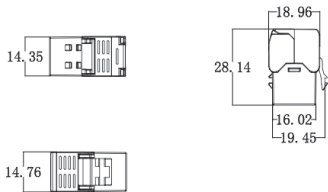
As a telecommunications connection module for application neutral telecommunications cable systems of cabling class 6A or applications up to 10GBase-T. The Keystone module fits into all common Keystone carrier systems.

Technical Data:

- short version 28mm
 - 360° contacting of the cable shield for improved EMC protection
 - Housing material: zinc alloy
 - Contact material: phosphor bronze
 - Coating contacts: nickel, gold plated 0.5µ
 - Pulling force: Max. 30N (according to IEC 60603-7-5)
 - Operating temperature: -10°C up to +60°C
 - Mating cycles: = 750
 - Diameter copper conductor: AWG (26/1 ... 22),
 - Suitable for: PoE IEEE 802.3af
PoE+IEEE 802.3at
- Cat6A, Class EA, shielded up to 10GBase-T,
500MHz according to EN 60603-7-51, ISO/IEC 11801

electrical Data:

Contact resistance	<20mΩ
Insulation resistance	>500MΩ
Dielectric strength	>1000V AC 60Hz 1min
Contact - shield	>1000V AC 60Hz 1min
PoE suitability according to PoE+	IEEE 802.3at
Socket contacts	
Mating cycles	>750



e-fairline Keystone Modul short Cat.6_A 1xRJ45

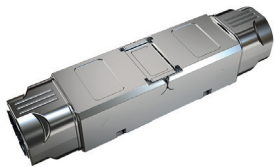
HxBxT 19x15x28mm

Item Number

1330126111

Cable Connector Cat 6A bis 500 MHz

Applications:



S/FTP cable connector of category 6A according to EN 60603-7-51 for extending or repairing existing installation routes. Correct 1:1 through-cabling guaranteed by routing on the cable managers. Re-openable metallic housing.

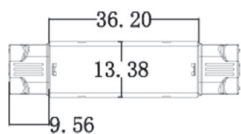
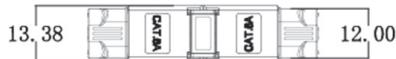
Technical Data:

- Zinc die-cast housing
- Connection via cable manager insulation displacement terminals
- Color code according to TIA/EIA 568A and B
- Conductor diameter AWG 22-26
- 360° shielding
- Cable support using cable ties

Cat6A, shielded up to 10GBase-T,
500MHz ISO/IEC 11801 Class EA
Adm 1.0 & 2.0
PoE IEEE 802.3af, PoE+ IEEE802.3at

electrical Data:

Contact resistance	<20mΩ
Insulation resistance	>500MΩ
Dielectric strength	>1000V DC/AC 60Hz, 1min
Contact - Contact	>1000V DC/AC 60Hz, 1min
PoE suitability according to PoE+	IEEE 802.3at
Mating cycles	>200



e-fairline Cable connector for S/FTP simplex data line HxBxT 13,4x12,4x55,4mm

Item Number

1330126500